

POWERMATIC®

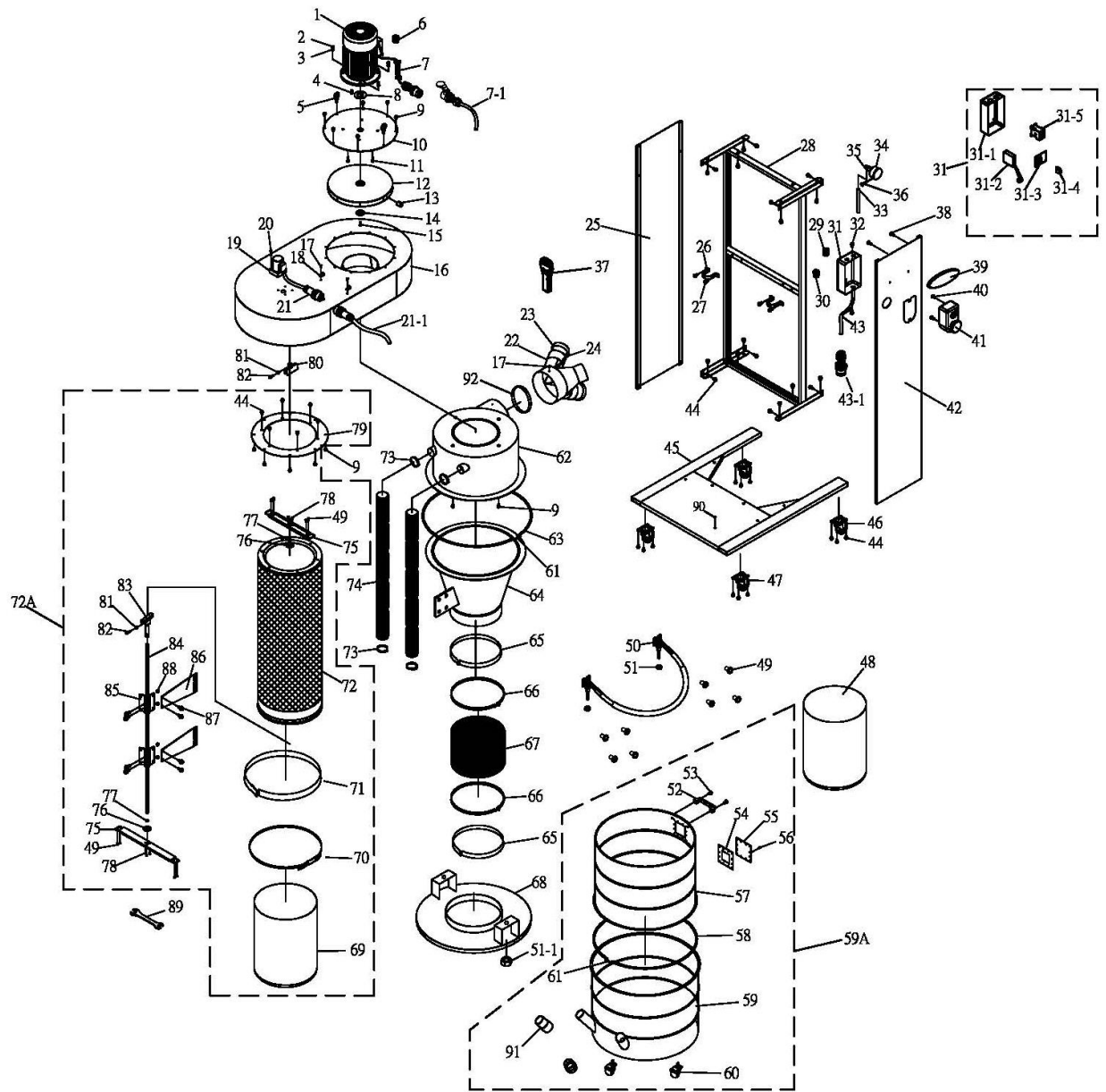
Parts List Insert (For Russia area)

Mobile Cyclone Dust Collector Model PM2200



Edition 1 07/2019

2.0 Replacement Parts
2.1 Exploded View



2.2 Parts List

| Index No | Part No | Description | Size | Qty |
|----------|---------------|---|-----------------|-----|
| 1 | PM2200-001AEP | Motor | 3HP, 400V , 3PH | 1 |
| | JCDC1.5-01FC | Fan Cover (not shown) | | 1 |
| | JCDC1.5-01CF | Cooling Fan (not shown) | | 1 |
| 2 | TS-0570021 | Hex Nut | 5/16"-18 | 4 |
| 3 | TS-0720081 | Lock Washer | 5/16" | 4 |
| 4 | JCDC2-06 | Key | 7x7x25 mm | 1 |
| 5 | JCDC1.5-08 | Eye Bolt | 5/16" | 2 |
| 6 | JCDC1.5-02 | Strain Relief | M20-13B/PG20 | 2 |
| 7 | 501-D009 | Motor Cord with Male Connector (P-553) | | 1 |
| 7-1 | 501-D025 | Motor Cord with Female Connector (S-441) | | 1 |
| 8 | JCDC2-07 | Rubber Seal | | 1 |
| 9 | TS-0081031 | Hex Cap Screw | 5/16"-18x3/4" | 18 |
| 10 | PM2200-010 | Motor Plate | | 1 |
| 11 | TS-0051051 | Hex Cap Screw | 5/16"-18x1" | 4 |
| 12 | PM2200-012 | Impeller | Dia. 15.8" | 1 |
| 13 | TS-0271071 | Socket Set Screw | 3/8"-16x3/4" | 1 |
| 14 | PM2200-014 | Impeller Washer | | 1 |
| 15 | TS-1503051 | Socket Head Cap Screw | M6x20 | 1 |
| 16 | PM2200-016B | Main Housing (serial #17090036 and higher) | | 1 |
| 17 | TS-081C022 | Pan HD Phillips Machine Screw | #10-24x3/8" | 3 |
| 18 | PM2200-018 | Wire Clip | UC4 | 2 |
| 19 | 225-B262-01 | Reducing Motor | 15W, 240V | 1 |
| 20 | JBTS10MJS-620 | Pan Head Screw | M4x60 | 4 |
| 21 | PM2200-021 | Reducing Motor Cord with Male Connector | | 1 |
| 21-1 | PM2200-0211 | Reducing Motor Cord with Female Connector | | 1 |
| 22 | PM2200-022 | Inlet | 8"x4"x3 | 1 |
| | PM2200-022A | Inlet Adaptor Assembly (#17,22 thru 24) | | 1 |
| 23 | JCDC1.5-20 | Inlet Adaptor Cap | 4" | 2 |
| 24 | JCDC1.5-19 | Chain | | 2 |
| 25 | PM2200-025 | Right Panel | | 1 |
| 26 | PM2200-026 | Hose Hanger | | 2 |
| 27 | TS-081C022 | Pan HD Phillips Machine Screw | #10-24x3/8" | 4 |
| 28 | PM2200-028B | Support Frame (serial #17090036 and higher) | | 1 |
| 29 | PM2200-029 | Strain Relief | MP-16 | 1 |
| 30 | JCDC1.5-02 | Strain Relief | M20-13B/PG20 | 1 |
| 31 | 201-F253 | Control Box Assembly (#31-1 thru 31-5) | | 1 |
| 31-1 | 525-C972-01 | Control Box Back Cover | | 1 |
| 31-2 | JCDC2-21-4 | Remote Control Transmitter | | 1 |
| 31-3 | PM2200-031CB | Circuit Board | | 1 |
| 31-4 | 501-O002 | Overload Protector | 5A | 1 |
| 31-5 | 501-K007-6 | Magnet Contactor (Breaker) | MP-09 | 1 |
| 32 | TS-2284082 | Pan HD Phillips Machine Screw | M4-0.7x8 | 2 |
| 33 | PM2200-033 | Clear Hose | Dia. 8mm | 1 |
| 34 | PM2200-034 | Negative Pressure Gauge | | 1 |
| 35 | PM2200-035 | Adaptor | | 1 |
| 36 | TS-0267061 | Socket Set Screw | 1/4"-20x5/8" | 1 |
| 37 | PM2200-037 | Remote Control Transmitter | | 1 |
| | | Battery (not shown) | AAA, 1.5V | 2 |
| 38 | TS-081F032 | Pan HD Phillips Machine Screw | 1/4"-20x1/2" | 2 |
| 39 | 3520B-140 | Powermatic Logo | | 1 |
| 40 | 5512797 | Pan HD Phillips Machine Screw | M5-0.8x25 | 2 |
| 41 | PM2200-041 | ON-OFF Switch Assembly | | 1 |

| Index No | Part No | Description | Size | Qty |
|----------|--------------|---|-------------------------|-----|
| | PM2000-298 | Safety Key for Magnetic Switch (not shown) | | 1 |
| 42 | PM2200-042 | Left Panel | | 1 |
| 43 | 503-J337 | Power Cord | 1.25mm ² x5C | 1 |
| 43-1 | 501-D008 | 3PH/400V CE Plug | P-551 | 1 |
| 44 | F012439 | Serrated Hex Flange Screw | 5/16"-18x1/2" | 42 |
| 45 | PM2200-045B | Base (<i>serial #17090036 and higher</i>) | | 1 |
| 46 | JCDC3-33 | Swivel Caster | 3" | 2 |
| 47 | JCDC3-33-1 | Swivel Caster w/ Brake | 3" | 2 |
| 48 | 717531 | Drum Collection Bag (pkg. of 5) | 980 x 1200 /mm | 1 |
| 49 | JMS10SCMS-72 | Pan HD Phillips Machine Screw | M5-0.8x8 | 16 |
| 50 | PM2200-050 | Quick Lever Assembly | | 1 |
| 51 | TS-0561082 | Hex Nut | 3/8"-16 | 2 |
| 51-1 | TS-0640091 | Nylon Lock Hex Nut | 3/8"-16 | 2 |
| 52 | JCDC1.5-42 | Handle | | 1 |
| 53 | TS-081F031 | Flat Head Phillips Mach Screw | 1/4"-20x1/2" | 2 |
| 54 | JCDC1.5-44 | Rubber Pad | | 1 |
| 55 | JCDC1.5-45 | PC Plate | | 1 |
| 56 | JCDC1.5-46 | Rivet | 4-2 | 12 |
| 57 | PM2200-057 | Upper Collection Drum | | 1 |
| 58 | PM2200-058 | Drum Clamp | | 1 |
| 59 | PM2200-059 | Lower Collection Drum | | 1 |
| 59A | PM2200-059A | Collection Drum Assembly (#52 thru 61, 91) | | 1 |
| 60 | JCDC2-49 | Swivel Caster | 2" | 4 |
| 61 | TS-0050111 | Hex Cap Screw | 1/4"-20x2-1/2" | 2 |
| 62 | PM2200-062 | Housing | | 1 |
| 63 | JCDC2-35 | Clamp | Dia. 500mm | 1 |
| 64 | PM2200-064 | Cone | | 1 |
| 65 | JCDC2-39 | Foam Tape | L970 x W30 x T1 /mm | 2 |
| 66 | JCDC2-40 | Hose Clamp | 12-1/2" | 2 |
| 67 | JCDC2-41 | Hose | Dia. 12" | 1 |
| 68 | PM2200-068 | Drum Lid | | 1 |
| 69 | 717511 | Canister Collection Bag (pkg. of 5) | 600 x 500 /mm | 1 |
| 70 | JCDC1.5-60 | Clamp | | 1 |
| 71 | JCDC1.5-59 | Foam Tape | L1265 x W20 x T3 /mm | 1 |
| 72 | PM2200-072H | Canister Filter – HEPA | | 1 |
| 72A | 1792200H | HEPA Filter, complete (includes #44,49,69-72,75-79,81-88) | | 1 |
| 73 | PM2200-073 | Hose Clamp | Dia. 2" | 4 |
| 74 | PM2200-074 | Hose | Dia. 2" | 2 |
| 75 | JCDC1.5-69 | Support Plate | | 2 |
| 76 | JCDC1.5-63 | Bearing Cover | | 2 |
| 77 | JCDC1.5-62 | Oil-retaining Bearing | | 2 |
| 78 | JCDC1.5-52 | Socket HD Button Screw | M5x6 | 6 |
| 79 | PM2200-079 | Canister Fixing Plate | | 1 |
| 80 | PM2200-080 | Rod Kit | | 1 |
| 81 | TS-1540031 | Hex Nut | M5 | 2 |
| 82 | TS-1522041 | Socket Set Screw | M5-0.8x12 | 2 |
| 83 | PM2200-083 | Rod | | 1 |
| 84 | PM2200-084 | Spindle | | 1 |
| 85 | JCDC1.5-65 | Fixing Block | | 2 |
| 86 | JCDC1.5-66 | Scraper | | 2 |
| 87 | TS-1481031 | Hex Cap Screw | M5-0.8x12 | 8 |
| 88 | TS-1540031 | Hex Nut | M5-0.8 | 4 |
| 89 | SWSS3-201 | Open End Wrench | 10-12 mm | 1 |
| 90 | 5711571 | Pan HD Phillips Machine Screw | 3/16"x1/4" | 1 |

| | | | |
|----|------------|-----------------|------------------------|
| 91 | PM2200-091 | Quick Connector | 2 |
| 92 | PM2200-092 | Foam Tape | L640 x W30 x T1/mm.. 1 |

3.0 Circuit Diagram for Electrical Connections

